



A Touchstone Energy® Cooperative 

CEO and General Manager

Michael W. Hastings

Address

19365 S.R. 84/285
Hernandez, New Mexico 87537

Telephone

505-753-2105

Toll-Free

888-755-2105

Emergency Outages

877-753-0095

Website

www.jemezcoop.org

Office Hours

8:00 a.m. to 4:30 p.m. (M-F)

Board of Trustees

President, Dennis Trujillo

District 1 - Jemez Springs, Jemez Pueblo, Zia Pueblo, Surrounding areas

Vice President, Manuel Bustos

District 5 - La Mesilla, San Pedro & north up to Alcalde

Secretary, John Ramon Vigil

District 4 - Santa Clara Pueblo north to Medanales including Lyden & La Canova west of the Rio Grande River

Treasurer, Dolores G. McCoy

District 2 - Cuba, surrounding areas in Sandoval, McKinley & San Juan Counties

Asst. Secretary/Treasurer

Stanley Crawford, District 5 - Velarde, Dixon & other areas located in Rio Arriba County east of the Rio Grande River

Dennis Gallegos, District 3 - Abiquiu & the Cañones, Coyote, Gallina, Llaves & Lindrieth areas

Lucas Cordova, Jr., District 4 - Chili, Chamita & other areas from Santa Clara Pueblo north to Medanales including Lyden & La Canova west of the Rio Grande River

Elias Coriz, District 5 - Chimayo & all other areas in Rio Arriba County east of the Rio Grande River

Marcelina Martinez, District 6 - Santa Cruz & surrounding areas located in Santa Fe County

Bruce Duran, District 6 - Nambe, Pojoaque, surrounding areas located in Santa Fe County

Marissa Maestas-Muller, Trustee-At-Large - represents the entire cooperative area at large

Trees and Power Lines Don't Mix!

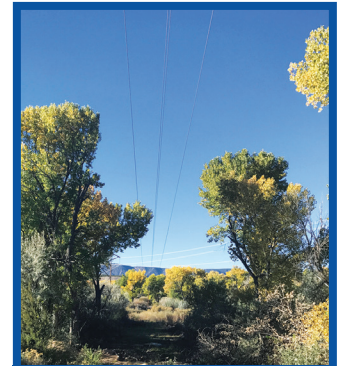
Trees grow into power lines. Wind blows leaves and branches into them or can topple a tree into them if the tree is in poor health. Any contact can cause flickers, outages and worse. JMEC's vegetation management is dedicated to maintaining the resilience of the cooperative's more than 4,000 miles of line by the ongoing control or elimination of branches that threaten the safe operation of its power lines.

That safety issue extends to educating community members so they understand where it is okay to plant trees, why they should call the co-op first on tree-meets-power line issues and some of the challenges the crews face.

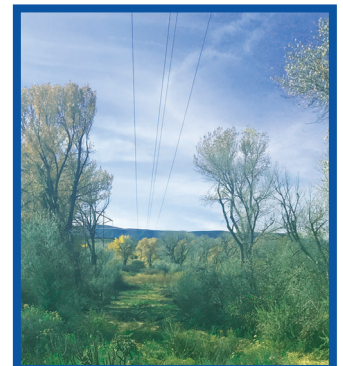
"Members need to call JMEC first, not a family member or landscaper, when a tree is a threat to a nearby power line," said Lenny Ortiz, vegetation management coordinator. "We will do an assessment, and depending on the easement and right-of-way status, we will send a trained crew to manage the tree's trimming appropriate to the type of tree it is and the hazard it presents."

Ortiz said JMEC's contracted crews focus on a planned schedule of vegetation management that is completed in the industry-standard six-year cycle while the in-house crew is dedicated to outages and prioritizing service requests from members.

"The goal is to keep a 20-foot right-of-way, ground to sky, 10 feet to each side of the high voltage lines," Ortiz said. "Keeping that area clear will reduce the risk of tree-related outages. We always try to get the member's permission before any tree work is done as their cooperation is crucial for our crews to do what is necessary to reduce outages and keep our community safe."



Before



After

EV Technology Comes to JMEC



JMEC's electric vehicle (EV) charging station at the cooperative's headquarters in Española is popular among the so-far small EV crowd, who nonetheless sometimes have to form a line to take advantage of the fast-charging fill up which is free to users, for now.

The ChargePoint Level 3DC model is compatible with Tesla's and other EV makes and models and became operational in December.

In September 2020, the cooperative's board of trustees approved two level two and one level three, or fast-charging, station so it could make this service available to members. In 2022, JMEC acquired a mid-level EV to learn first-hand the pros and cons of the innovation to inform future planning of the cooperative's infrastructure as this automotive sector grows.

Jemez Mountains Electric Foundation Invites Applications for 2023 Student Scholarships

Jemez Mountains Electric Cooperative, Inc., is excited to invite all eligible students to apply for the 2023 round of education scholarships!

For more than 30 years, the Jemez Mountains Electric Foundation has lived out its commitment to advancing higher education among our member families by the giving of significant scholarship awards. There are several requirements for the scholarship, all of which can be found on the two-page application form. This form has been provided to all area high school guidance counselors and can be found on our website at <https://jemezcoop.org/scholarship-program>. Applications may also be requested by parents, guardians and students by emailing Tina Trujillo Archuleta ttrujillo@jemezcoop.org or calling 505.367.1151.



Jemez Mountains Electric Cooperative, Inc.

Your Touchstone Energy® Cooperative

2023 JEMEZ MOUNTAINS ELECTRIC FOUNDATION SCHOLARSHIP APPLICATION

Name _____ Grade _____
Address _____ Birthdate ___/___/___
City, State _____ Zip Code _____

Additional information, including the deadline for applications, will be available as JMEC shares more about the Jemez Mountains Electric Foundation scholarships with local high school guidance counselors, in coming ads, on our website and in social media.

Employee Spotlight: Juan Duran



It's a safe bet that JMEC senior journeyman lineman Juan Duran never pictured himself in a jolly red suit, saying, "Ho, ho, ho!" to dozens of little kids as they crawled on his lap or beside him and whispered their fondest wishes for a Merry Christmas. But that is where you would have found him last December, in the JMEC headquarters lobby, not exactly filling out the suit but admirably filling out the role as a jolly

St. Nick to a bunch of visiting families.

"It was an honor to do that for the co-op," Duran said. "It was nerve wracking at first. I'm a people person but I'm not usually talking to 40-50 different people in a matter of a couple of hours. I really enjoyed it, though. I can see doing that again."

Duran has been doing whatever was needed to serve JMEC and its members for years. He joined JMEC in 2005 on the tree trimming crew and jumped on the opportunity to go through the co-op's four-year apprenticeship to become a journeyman lineman. He now runs crews who do construction adding new line and services and said

while much has changed since he started, the focus on safety is always the priority.

"When there is an outage, I appreciate that members are hopeful for the power to come back on quickly but it takes a good while to do the job safely – testing, grounding, checking all is done correctly," said Duran.

In the recommendation of Duran for the Spotlight, a comment included, "He is always willing to teach and is a very hard worker. Safety is number one and he makes it a priority to remind us of it. He has shown many of us how to perform our work with pride!"



Duran, who lives in Española and has a daughter, 20, and son, 17, said he loves the job – being in the outdoors, meeting the variety of challenges and working alongside "all the good people at the co-op" including the "youngsters" on his crews. When not on the job or on call, he enjoys being in the mountains – camping, riding the side-by-sides or his Harley.

The information below is the new residential and small commercial electric rates for Jemez Mountains Electric Cooperative, Inc. (JMEC), effective January 1, 2023.

ALSO INCLUDED ARE THE OLD ELECTRIC RATES AND A COMPARISON COLUMN.

Please call the JMEC office at 505-753-2105 if you have any questions.

**JEMEZ MOUNTAINS ELECTRIC COOPERATIVE, INC.
SUMMARY OF RATE INCREASE**

	Existing Rates	Approved Phase 1	Change - \$ Phase 1
Power Cost, per kWh Sold	\$0.081303	\$0.081303	\$0.000000
PCA Base Cost, per kWh Sold	\$0.074583	\$0.074583	\$0.000000
PCA Factor, per kWh	\$0.006720	\$0.006720	\$0.000000
DCA Factor, per kWh Residential	(\$0.001106)	(\$0.001106)	\$0.000000
Residential			
Customer Charge	\$ 14.00	\$ 18.00	\$ 4.00
Energy Charge, per kWh			
First 700 kWh	\$0.101400	\$0.112072	\$0.010672
Next 300 kWh	\$0.111400	\$0.122072	\$0.010672
Over 1,000 kWh	\$0.121400	\$0.122072	\$0.000672
Net Metering Fee	\$ 5.00	\$ 5.00	\$ -
Residential - Time of Use			
Customer Charge	\$ 16.00	\$ 18.00	\$ 2.00
Energy Charge, per kWh			
On Peak (6am - 1pm, 4pm - 9pm)	\$0.142850	\$0.158884	\$0.016034
Off Peak (1pm - 4pm, 9pm - 6am, Weekends)	\$0.081850	\$0.092463	\$0.010613
Small Commercial			
Customer Charge	\$ 35.00	\$ 42.50	\$ 7.50
Energy Charge, per kWh	\$0.117460	\$0.126890	\$0.009430
Net Metering Fee	\$ 5.00	\$ 5.00	\$ -
Small Commercial - Time of Use			
Customer Charge	\$ 40.00	\$ 42.50	\$ 2.50
Energy Charge, per kWh			
On Peak (6am - 1pm, 4pm - 9pm)	\$0.152760	\$0.169404	\$0.016644
Off Peak (1pm - 4pm, 9pm - 6am, Weekends)	\$0.075760	\$0.084887	\$0.009127



Jemez Mountains Electric Cooperative, Inc.

Your Touchstone Energy® Cooperative 

This institution is an Equal Opportunity Provider and Employer

www.jemezcoop.org



Your Touchstone Energy® Cooperative 



JEMEZ MOUNTAINS ELECTRIC COOPERATIVE, INC.

Española Office: 19365 S.R. 84/285, Hernandez NM 87537 / Phone: 505-753-2105 / Toll Free: 1-888-755-2105

Jemez Springs Office: 17421 Hwy 4, Jemez Springs NM 87025 / Phone: 575-829-3550 / Toll Free: 1-888-755-2105

Cuba Office: #71 Hwy 126, Cuba NM 87013 / Phone: 575-289-3241 / Toll Free: 1-888-755-2105