



Jemez Mountains Electric Cooperative, Inc.

Your Touchstone Energy® Cooperative 

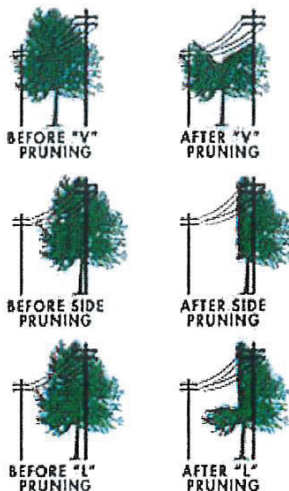
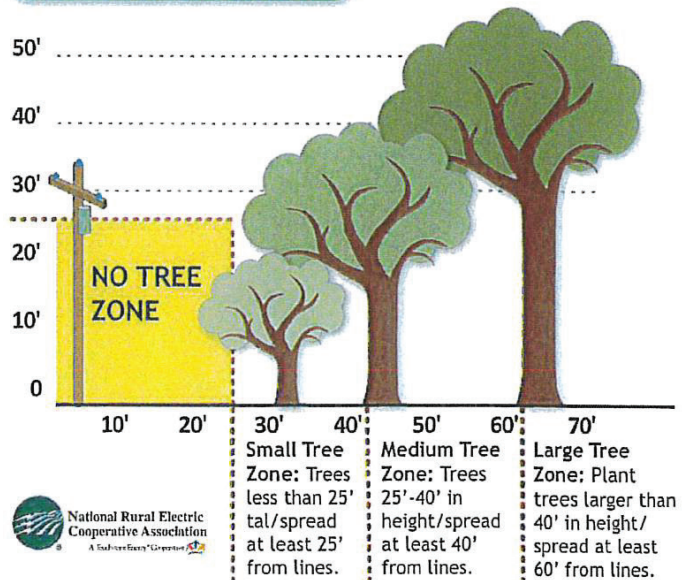
Managing Tree Growth for a Healthy Electric System

Trees and power lines don't mix. When trees come in contact with power lines they become a hazard. NOT GOOD!!! JMEC's goal is to keep the power line right-of-ways completely clear. We need everyone's cooperation to provide safe and reliable power. By allowing JMEC access to remove trees and tree growth that are in the power line right-of-ways it will help maintain these lines safely, effectively and affordably. Together we can proactively reduce the cost and increase ALL OUR SAFETY by managing tree growth within the power line right-of-way.

Tree Trimming/Removal:

JMEC's approach on vegetation management is to remove all trees within the right-of-way that may come in contact with power lines. The most effective method is to cut the tree down and treat with herbicides. This will avoid future growth and repetitive removal cost and improves safety and reliability. JMEC will make every effort to limit tree removal and herbicide use where possible. In cases where trees are trimmed, the removal of branches may cause an unattractive look, but this method slows the tree branches from growing back into the line. JMEC crews are equipped with wood chippers. All debris will be chipped and hauled away from your property, unless otherwise arranged.

Tree Planting Guide



BE ON THE LOOKOUT FOR CREWS IN YOUR AREA! Both JMEC and Contractor trucks will have JMEC logos for easy identification. Any questions or concerns about crews at your home or if you would like wood chips for the Espanola area please contact our Vegetation Management Coordinator, Lenny Ortiz at 505-367-1165, 505-927-8549 or email lenny.ortiz@jemezcoop.org and for the Cuba/Jemez Springs areas Asst. Vegetation Management Coordinator, Amy Valdez at 505-901-3344 or email evaldez@jemezcoop.org

To report dangerous tree conditions please contact our office at 1-505-753-2105 or 1-888-755-2105 or after normal business hours, you may call our Outage Hotline at 1-877-753-0095. Also visit our vegetation management page under services at www.jemezcoop.org, like us on Facebook, follow us on Twitter or listen for our radio spots to get the latest updates.